



Myanma Agricultural & General Development Public Co., Ltd

Corporate Profile

Founded on September 11st, 2012



Introduction

- Myanmar Agricultural & General Development Public Co., Ltd. (“MAGDPL”) was established on 11th September 2012 with the majority of the executive committee members of Myanmar Pulses, Beans, Maize and Sesame Seeds Merchants Association.



Vision

To be a leading force in transforming Myanmar's agricultural sector, fostering sustainable development, and setting new standards in international trade and logistics.



Mission

Empowering Shareholders: Invest in sustainable and responsible businesses that contribute to the country's progress while ensuring long-term benefits for our shareholders.

Supporting Farmers: Develop efficient logistics models to reduce production costs for farmers and enhance the storage, handling, and transportation of agricultural products from fields to export ports.

Modernizing Trade: Transition from traditional trade practices to internationally recognized standards, promoting transparency and efficiency in both local and international markets.



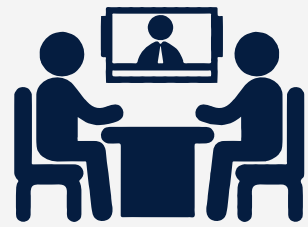
Core Values



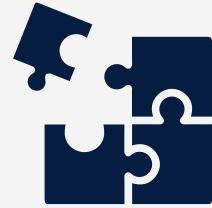
Integrity



Excellence



Collaboration



Innovation

Sustainability

Commitment to environmentally responsible practices that ensure long-term viability and prosperity for all stakeholders.

Innovation

Continuously seek and implement innovative solutions to enhance productivity, efficiency, and competitiveness.

Integrity

Uphold the highest standards of ethics and transparency in all our business dealings and interactions.

Core Values

Collaboration

Foster strong partnerships with farmers, shareholders, and other stakeholders to achieve common goals and mutual success.

Excellence

Strive for excellence in all our operations, from investment and logistics to export and trade, ensuring the highest quality and service standards.

Progress

Drive economic and social progress by investing in infrastructure, technology, and practices that benefit the community and the nation.

Objective

To establish an international standard Myanmar Commodity Exchange Center that can conduct all spot and future transactions as per the international rules and regulations, without the needs for trust-based practices.



History

2012

Myanma Agricultural & General Development Public Co., Ltd. (“MAGDPL”) was established on 11th September 2012 with the majority of the executive committee members of Myanmar Pulses, Beans, Maize and Sesame Seeds Merchants Association.

The Company Registration Number that was registered with the Ministry of National Planning and Economic Development was 2346/2012-2013 (11-9-2012) and it was granted permission to start business operations with the Public Companies’ Business Commencement Certificate Number 7/2012-2013 (26-11-2012).

2015

MAGDPL entered into a 50 year BOT (Build-Operate-Transfer) agreement with Myanmar Port Authority for plot 29 of Thilawa Port Area. On 11th December 2015, MAGDPL submitted a proposal to Myanmar Investment Commission outlining plans for the development and construction of an international jetty along with related facilities to facilitate commercial activities within the Thilawa Port Area.

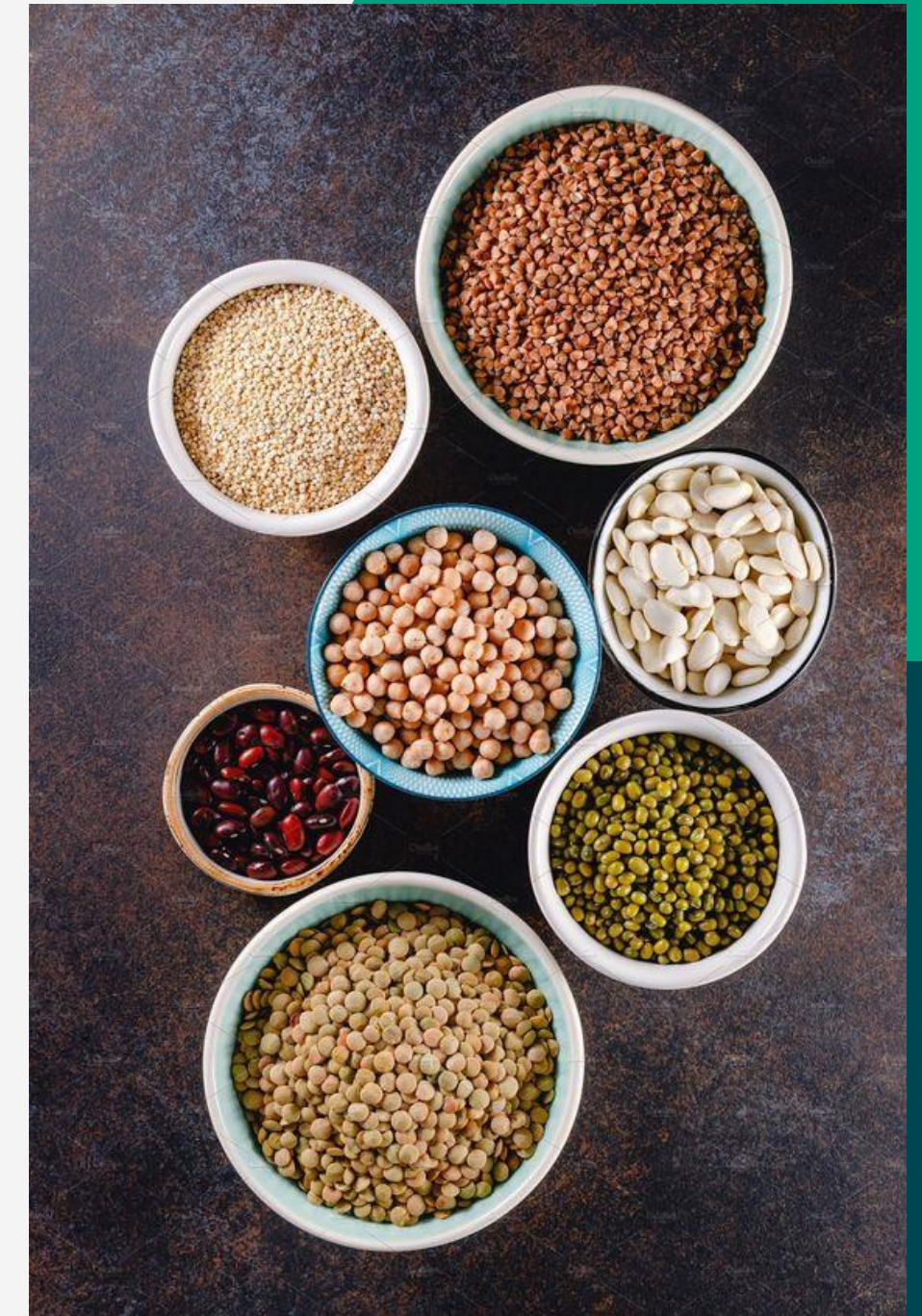
History

2016

Myanmar Investment Commission has approved on 24-3-2016 with Permit no. MaNaTha-1153/2016 for carrying out development and operation of multi-purpose international port terminal on BOT basis for agricultural and oilseed products and leasing of related facilities.

The signing ceremony for Thilawa Port Area Plot No. (29) with Myanmar Port Authority took place on 27th April 2016.

According to Letter No. 10(1)/7/Thamada Office dated 26th January 2016, Ministry of Commerce has issued the permission certificate on 24th March 2016 so that MAGDPL can establish the Myanmar Commodity Exchange to facilitate domestic and international trades with insurance, ensuring systematic trading of pulses, maize, sesame seeds and other agricultural products, while complying with international standards and regulations.



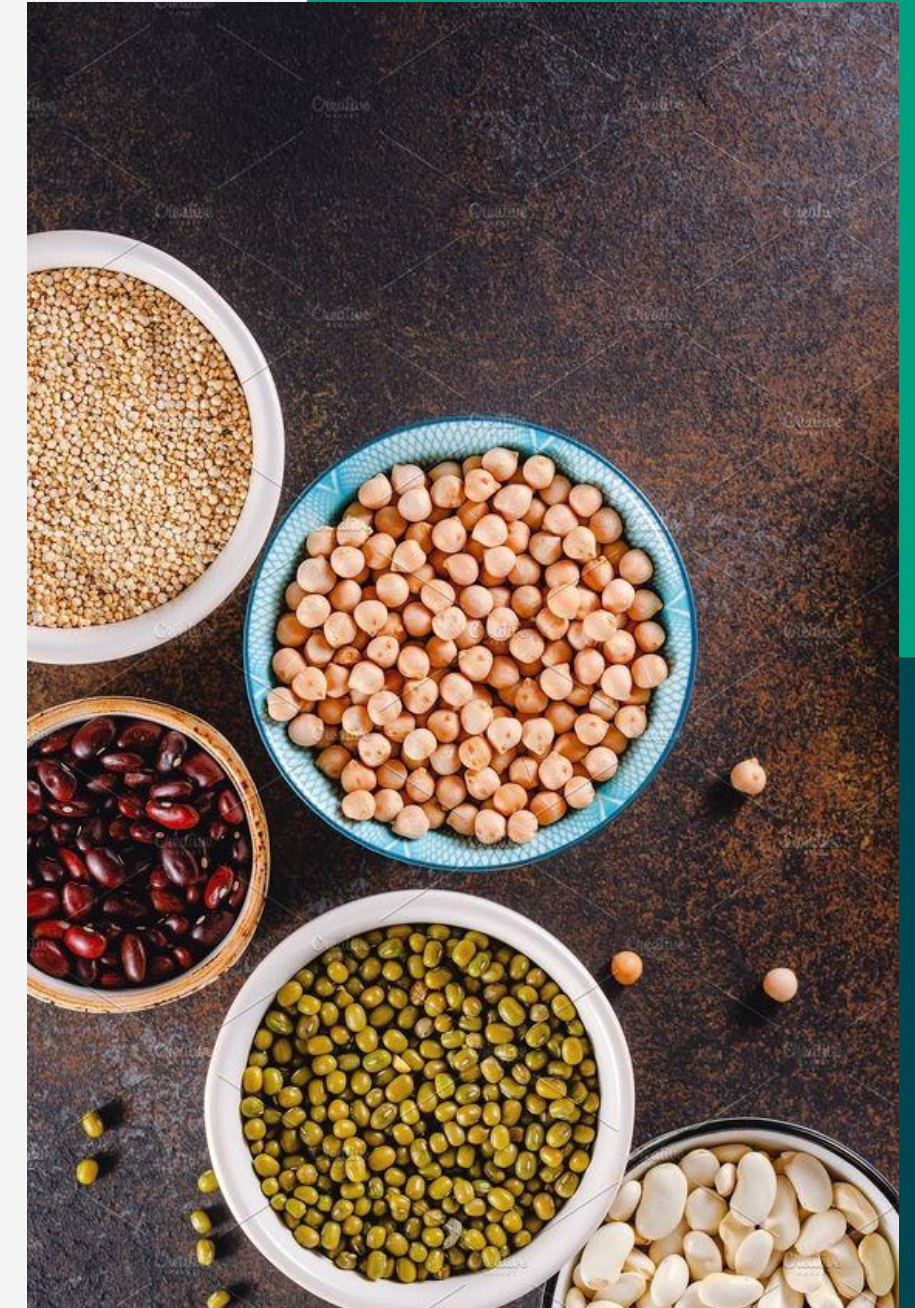
History

2018

On 15th October 2018, the Company completed the online re-registration with the Directorate of Investment and Company Administration and the new company registration has become 168982240 (11-9-2012) under the company name of “Myanma Agricultural and General Development Public Co., Ltd. – MAGDPL”.

Myanma Agricultural & General Development Public Co., Ltd. (“MAGDPL”) is the initial founding shareholder director at Myanmar Thilawa SEZ Holdings Public Co., Ltd. - MTSH.

Myanma Agricultural & General Development Public Co., Ltd. (“MAGDPL”) is the initial founding shareholder director at Myanmar National Telecom Holdings Public Company Limited – MNTH



History



2024

As of 31st March 2024, the total number of shareholders was 109, and 1,006,035 shares have been issued at 10,000 MMK per share, resulting in paid-up capital of 10,060,350,000 MMK.

MAGDPL is currently implementing the development of multi-purpose international port terminal at which the operation of agricultural and oilseed products, and related facilities, which are to be leased out at Thilawa Port Area Plot No. (29).

PRESENT

Some Text about YSX

Overview

- Sourcing agricultural products locally and exporting them.
- Investing in Myanmar Thilawa SEZ Holdings Public Co., Ltd. (MTSH) and Myanmar National Telecom Holdings Public Co., Ltd. (MNTH)
- To develop a multi-purpose international port terminal for handling agricultural and oil seed products at Thilawa Port Area Plot No. 29, to construct and lease the warehouses, siloes and other related commercial buildings for the storage of pulses, maize, sesame seeds and other agricultural products as well as imported agricultural inputs such as fertilizers and pesticides.
- Importing and exporting of the aforementioned items by MAGDPL.
- Transporting, storing, processing and exporting of pulses, maize and sesame seeds from the growing regions to the international markets



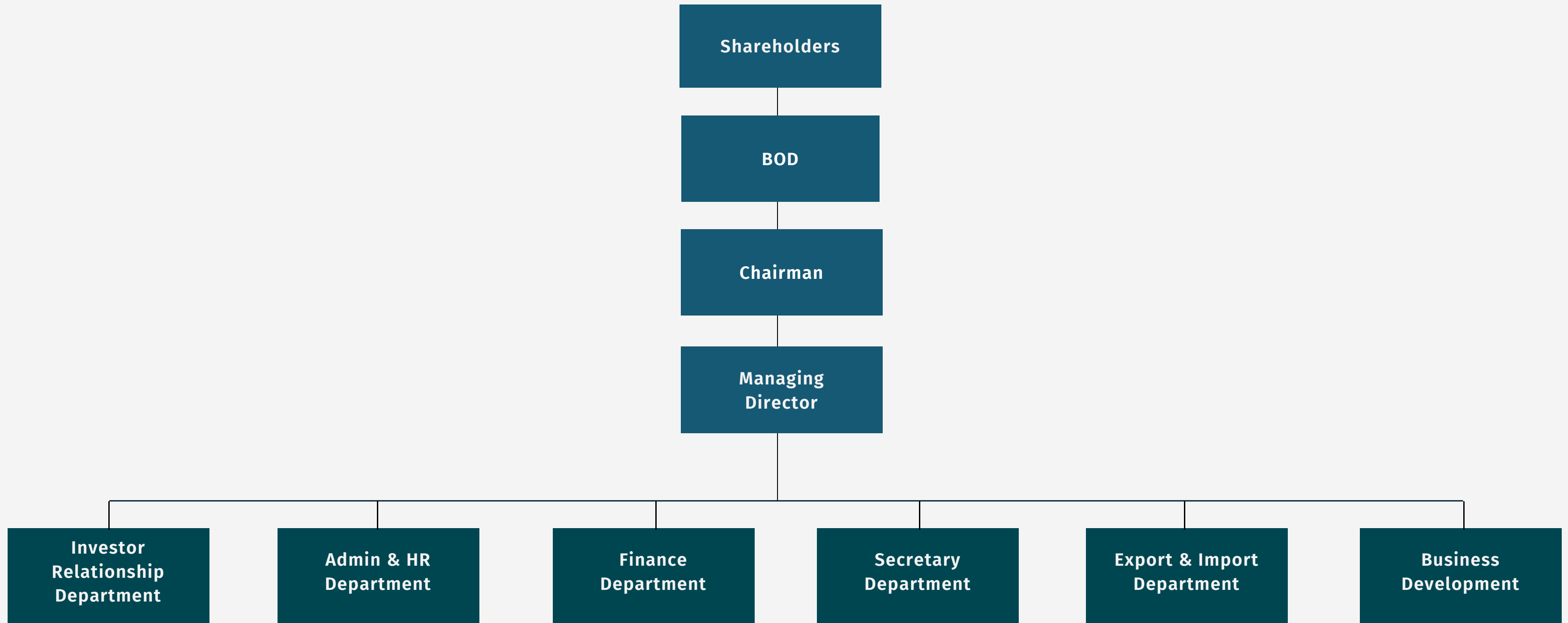
Overview

**109
Shared Members**

**10 Billion+ MMK
Capital Revenue**

- 70 shared member in 2012.
- 109 total shared member in 2024.

Organizational Chart



Board of Directors

U Tun Lwin
Chairman

Dr. Maung Maung Aye
Managing Director

U Toe Aung Myint
Independent Director

U Than Myint
Director

U Naing Moe
Director

U Wunna Khine
Director

U Soe Paing
Director

U Min Ko Oo
Director

U Ohn Saing
Director

U Maung Maung Tin
Director

U Soe Aung
Director

U Sai Ba Nyan
Director

U Aung Naing
Director

U Thein Win
Director

U Aung Win
Director

U Thein Han
Director

U Sai Aung Min Latt
Director

U Kyaw Lynn
Director

U Myint Zaw
Director

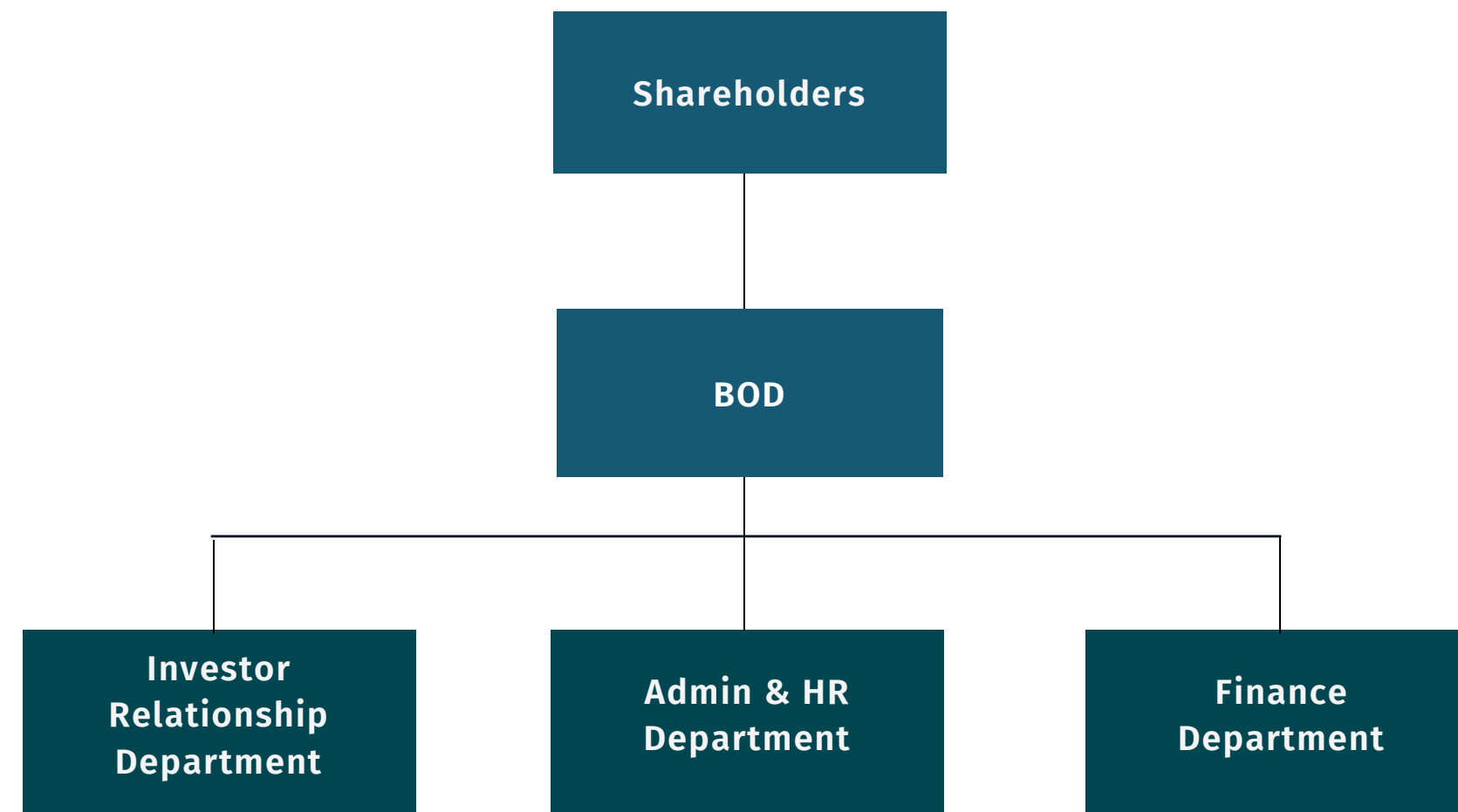
U Zaw Myo Min
Director

U Hla Oo
Director

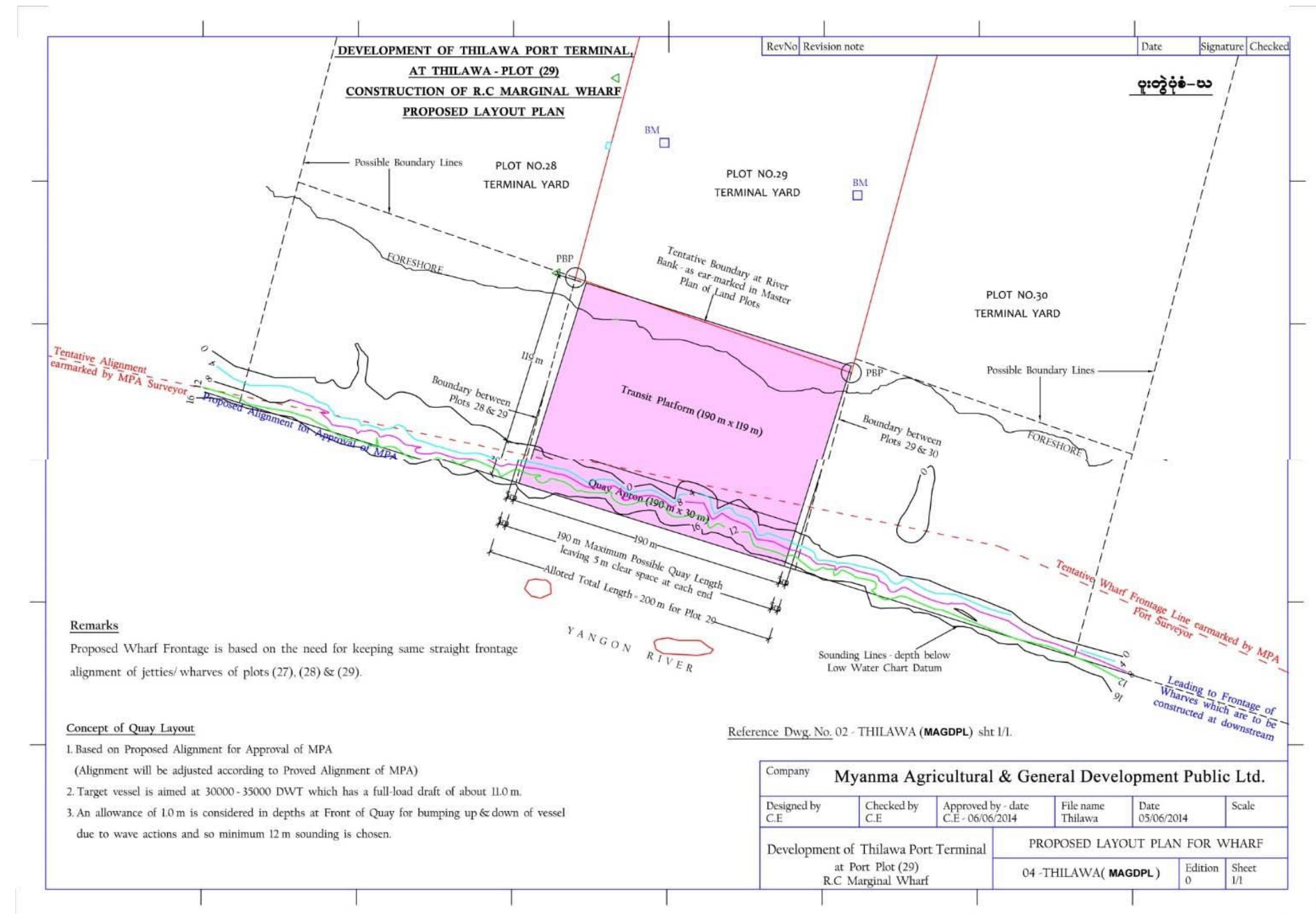
U San Nyein
Director

U Win Lwin
Director

Board of Committee

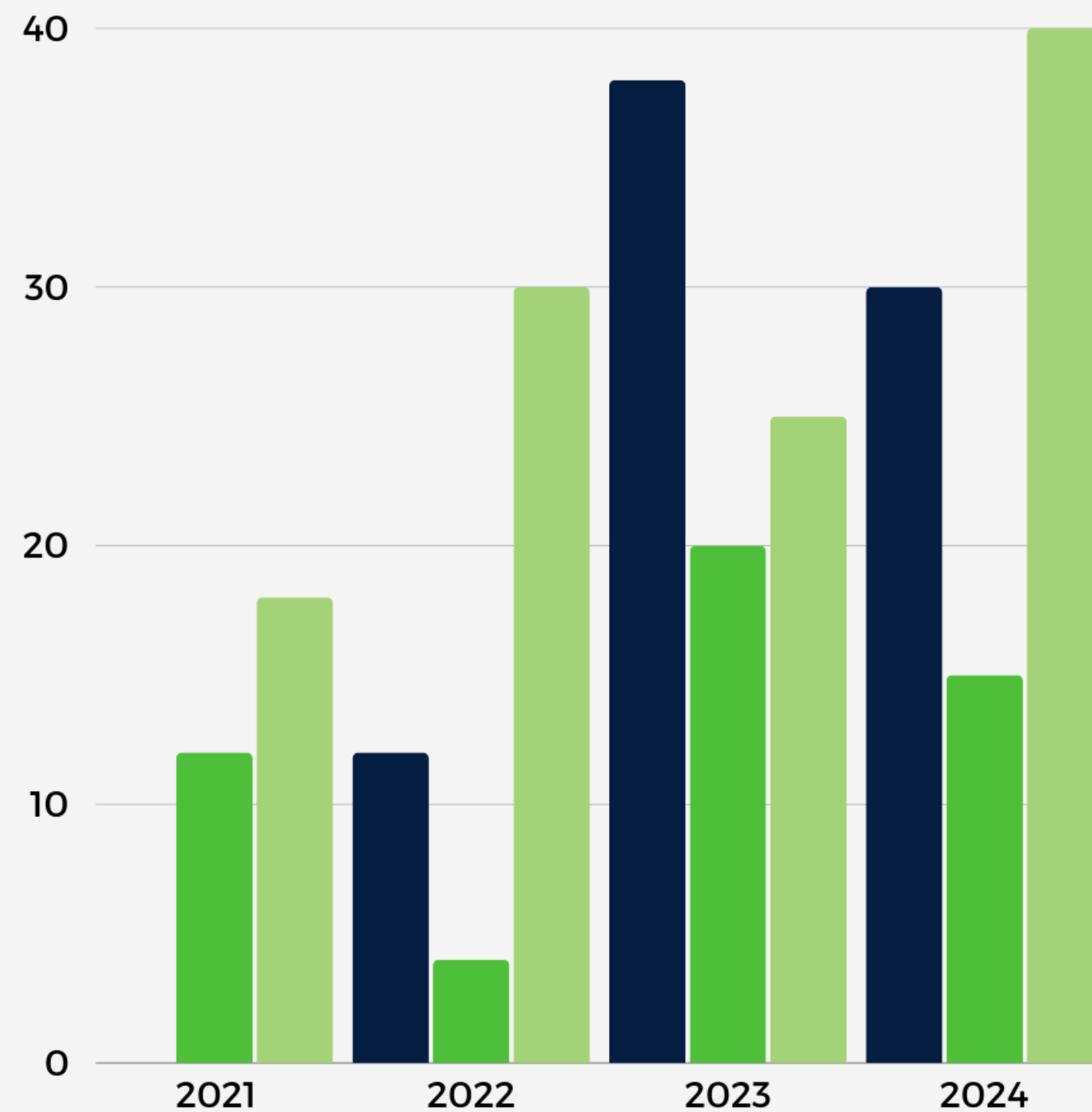


Project Plan



(19.768 acres) commercial area in Thilawa Port No. 29 to be built and implemented exclusively by MAGDPL.

Market Data



Future Plan

- To establish an international standard Myanmar Commodity Exchange Center that can conduct all spot and future transactions as per the international rules and regulations, without the needs for trust-based practices.
- Transporting, storing, processing and exporting of pulses, maize and sesame seeds from the growing regions to the international markets
- Sourcing agricultural products locally and exporting them
- Investing in Myanmar Thilawa SEZ Holdings Public Co., Ltd. (MTSH) and Myanmar National Telecom Holdings Public Co., Ltd. (MNTH)

THE EXCHANGE PROCESS



Subject
Text here



Subject
Text here



Subject
Text here

Future Plan

- To develop a multi-purpose international port terminal for handling agricultural and oil seed products at Thilawa Port Area Plot No. 29, to construct and lease the warehouses, siloes and other related commercial buildings for the storage of pulses, maize, sesame seeds and other agricultural products as well as imported agricultural inputs such as fertilizers and pesticides.
- Importing and exporting of the aforementioned items by MAGDPL.



Subject
Text here



Subject
Text here



Subject
Text here

Thank You!



Everest Cantu



Phone
+ (951) 230 1787



Mail
info@magdpl.com



Website
www.magdpl.com



Address
3/B, Strand Rd., Shwe Zabu River
View Complex, Sin Min Ward, Ahlone
Township, Yangon , Myanmar